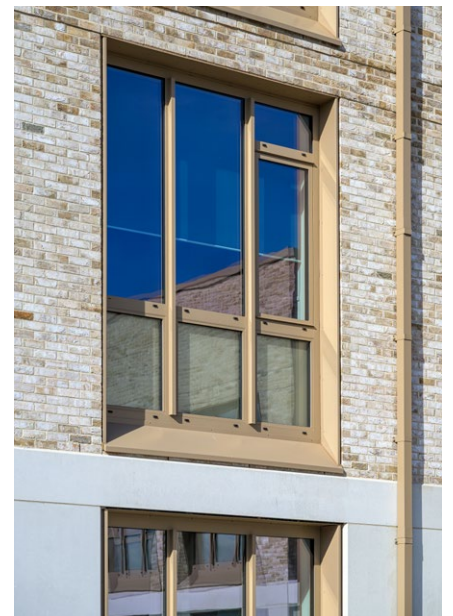


# Drumgeith Community Campus

Dundee, Scotland



**Metal Technology**  
Steeple Rd Industrial Estate  
Steeple Road  
Antrim BT41 1AB  
Northern Ireland  
[metaltechnology.com](http://metaltechnology.com)

T+44 (0)28 9448 7777 | [sales@metaltechnology.com](mailto:sales@metaltechnology.com) | Follow us on [LinkedIn](#)





# Drumgeith Community Campus

Dundee, Scotland

## Energy efficiency. Community impact. A landmark for Dundee.

The £100m Drumgeith Community Campus in Dundee opened its doors in August, welcoming pupils and the wider community to a state-of-the-art facility designed by Holmes Miller and delivered by Robertson Group in partnership with Dundee City Council.

At the heart of the development is the new Greenfield Academy, Dundee's first secondary school built to rigorous Passivhaus standards - setting a new benchmark for energy efficiency and sustainable learning environments.

The campus showcases Metal Technology's high-performance façade solutions, with its advanced Passivhaus-certified glazing systems - System 17 Hi+ Passive House Curtain Walling, System 5-35D Hi+ Passive House Door and System 5-45 Hi+ Passive House Tilt and Turn Window - expertly installed by Avtek Ltd. These systems ensure exceptional thermal performance, airtightness, and comfort, supporting the project's low-energy design aspirations.

Greenfield Academy provides capacity for around 1,600 pupils, while the wider campus serves as a vibrant community hub. Facilities include a music and drama centre, café, and library – all accessible to the public – alongside extensive sports amenities such as floodlit all-weather pitches, a fitness suite, dance studio, gym, and games halls, encouraging year-round community engagement.

As Dundee's largest ever investment in education, sport, and community provision, Drumgeith Community Campus represents a flagship project that delivers both outstanding educational opportunities and lasting social value.

### Client

Dundee City Council

### Architect

Holmes Miller

### Main Contractor

Robertson Group

### Systems Used

#### THERMAL

System 17 Hi+ Passive House Curtain Walling

#### THERMAL

System 5-35D Hi+ Passive House Door

#### THERMAL

System 5-45 Hi+ Passive House Tilt and Turn Window

**Metal Technology**  
Steeple Rd Industrial Estate  
Steeple Road  
Antrim BT41 1AB  
Northern Ireland  
[metaltechnology.com](http://metaltechnology.com)

T+44 (0)28 9448 7777 | [sales@metaltechnology.com](mailto:sales@metaltechnology.com) | Follow us on [LinkedIn](#)

