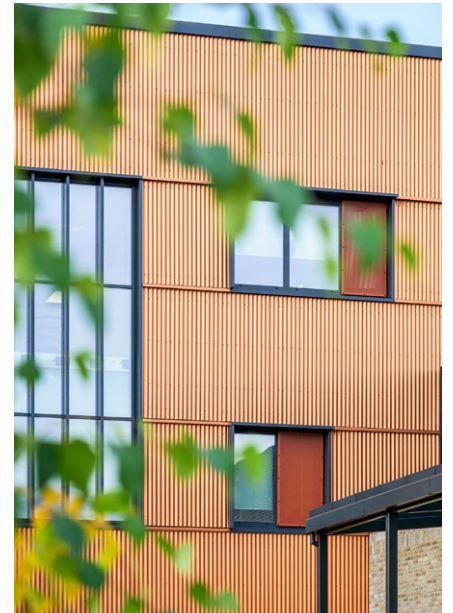


# Faifley Campus

West Dunbartonshire, Scotland



**Metal Technology**  
Steeple Rd Industrial Estate  
Steeple Road  
Antrim BT41 1AB  
Northern Ireland  
[metaltechnology.com](http://metaltechnology.com)

T+44 (0)28 9448 7777 | [sales@metaltechnology.com](mailto:sales@metaltechnology.com) | Follow us on [LinkedIn](#)





# Faifley Campus

West Dunbartonshire, Scotland

## Passivhaus Excellence in Education

Designed by Holmes Miller and delivered by Morrison Construction, the £34 million Faifley Campus in Clydebank, West Dunbartonshire is a landmark Passivhaus-certified development accommodating approximately 1,200 pupils.

The campus brings together Edinbarnet Primary School, St Joseph's Primary School, an Early Learning and Childcare Centre (ELCC), Faifley Community Library, and shared community spaces within a single, highly energy-efficient building.

A key contributor to the project's success, Metal Technology's advanced Passive House glazing systems were fabricated and installed by Avtek. These systems played a critical role in achieving the stringent thermal performance and airtightness standards required for Passivhaus certification.

The design adopts a compact building form combined with an enhanced thermal envelope and a robust airtightness strategy, supporting a fabric-first approach to energy efficiency. Metal Technology's glazing solutions were integral in minimising heat loss while maximising natural light, contributing to both occupant comfort and reduced operational energy demand.

The completed development provides a future-proofed, sustainable learning environment that supports education, wellbeing, and community engagement - setting a benchmark for low-energy school design across West Dunbartonshire.

### Client

West Dunbartonshire Council

### Architect

Holmes Miller

### Main Contractor

Morrison Construction

### Systems Used

#### **THERMAL**

System 17 Hi+ Passive House Curtain Walling

#### **THERMAL**

System 5-35D Hi+ Passive House Door

#### **THERMAL**

System 5-45 Hi+ Passive House Tilt and Turn Window

**Metal Technology**  
Steeple Rd Industrial Estate  
Steeple Road  
Antrim BT41 1AB  
Northern Ireland  
[metaltechnology.com](http://metaltechnology.com)

T+44 (0)28 9448 7777 | [sales@metaltechnology.com](mailto:sales@metaltechnology.com) | Follow us on [LinkedIn](#)

